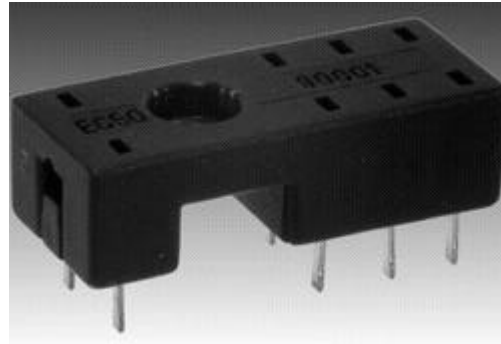
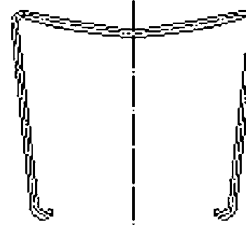
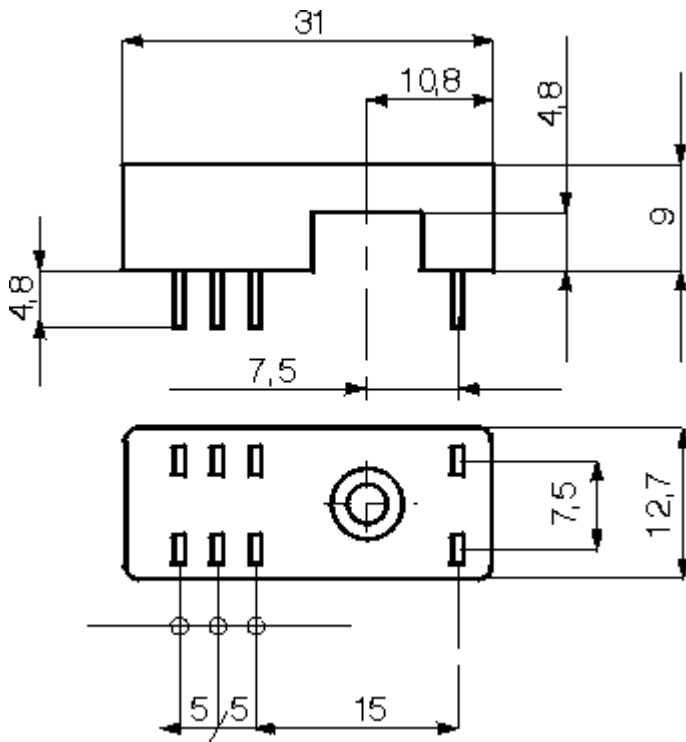


PCB SOCKETS FOR RM-SERIES RELPOL RELAY

GW80 socket for PCB mounting - for relays RM83, RM84, RM85, RM94

Socket PW80, raster 5 mm, 12A/300V

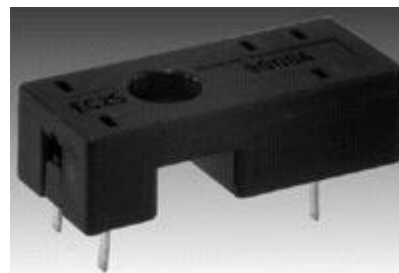
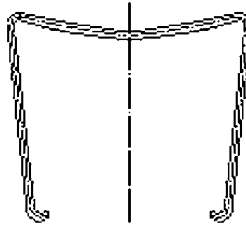
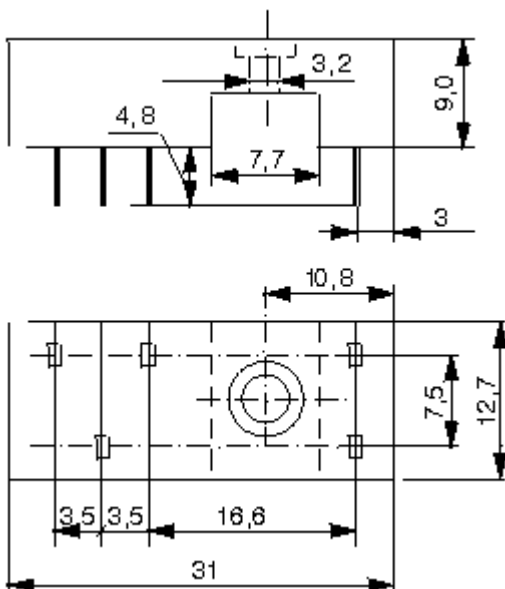
CLIP RM81 0001 (RM83, RM94) or PW80 0002 (RM84, RM85)



GW92 socket for PCB mounting - for relays RM92, RM87

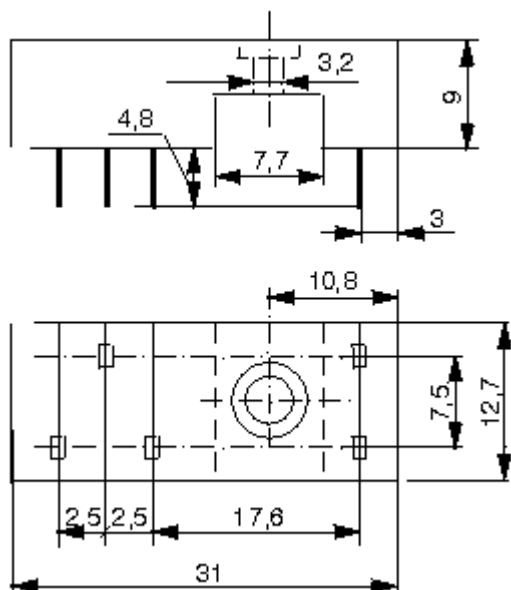
Socket GW92, raster 3,5 mm, 12A/300V

CLIP RM81 0001 (RM92) or PW80 0002 (RM87)

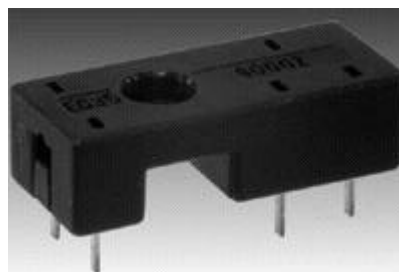
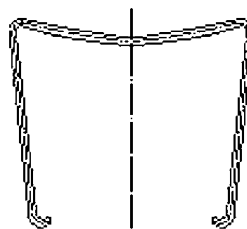


GW93 socket for PCB mounting - for relay RM93

Socket GW93, raster 2,5 mm, 12A/300V



CLIP RM81 0001



GW96 socket for PCB mounting - for relay RM96

Socket GW96, raster 3,2 mm, 12A/300V, use together with CLIP MH16-2

