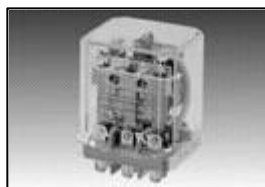


RUC POWER INDUSTRIAL RELAY

COIL DATA

Rated voltage	6...220 V DC 6...380 V AC 50Hz, 50/60Hz
Must release voltage	0,1 U _n (DC) 0,15 U _n (AC)
Operating range of supply voltage	see tables below
Rated power consumption	1,5 W (DC) 2,5 VA (AC)



Coil data - DC version

Coil code	Rated voltage V DC	Coil resistance +/- 10% at 20°C, Ohm	Operating range of supply voltage at 20°C, V DC	
			min. (at 20°C)	max. (at 55°C)
1006	6	28	4.8	6.6
1012	12	110	9.6	13.2
1024	24	430	19.2	26.4
1042	42	1340	33.6	46.2
1048	48	1750	38.4	52.8
1060	60	2700	48	66
1110	110	9200	88	121
1120	120	11000	96	132
1220	220	37000	176	242

Coil data - AC 50 Hz version

Coil code	Rated voltage V AC	Coil resistance +/- 15% at 20°C, Ohm	Operating range of supply voltage at 20°C, V AC	
			min. (at 20°C)	max. (at 55°C)
3006	6	5	4.8	6.6
3012	12	20	9.6	13.2
3024	24	88	19.2	26.4
3110	110	2000	88	121
3120	120	2300	96	132
3220	220	7200	176	242
3230	230	7900	184	253
3240	240	8300	192	264
3380	380	20500	304	418

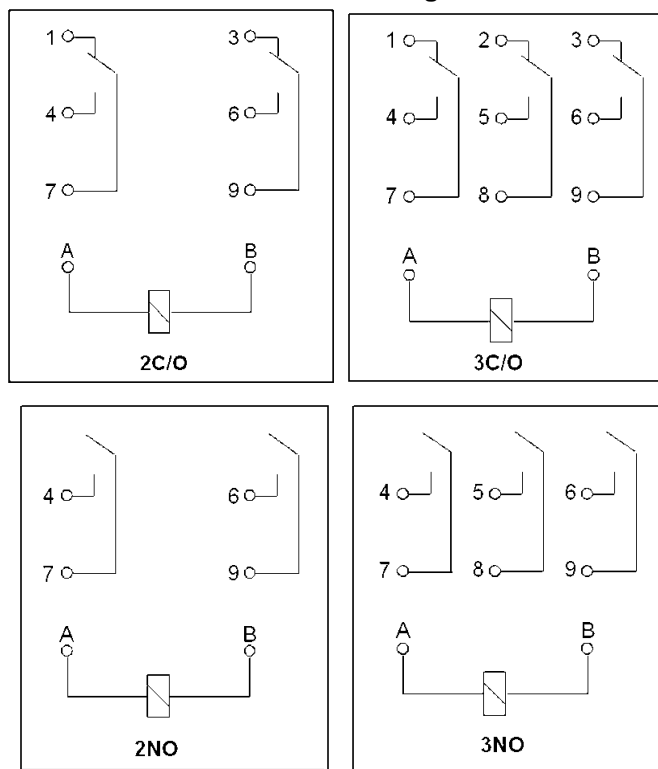
Coil data - AC 50/60Hz version

Coil code	Rated voltage V AC	Coil resistance +/- 15% at 20°C, Ohm	Operating range of supply voltage at 20°C, V AC	
			min. (at 20°C)	max. (at 55°C)
5006	6	4.3	4.8	6.6
5012	12	18.5	9.6	13.2
5024	24	75	19.2	26.4
5110	110	1700	88	121
5120	120	1910	96	132
5220	220	6980	176	242
5230	230	7080	184	253
5240	240	7760	192	264
5380	380	19100	304	418

CONTACTS DATA

Contact number & arrangement	2C/O, 3C/O, 2NO, 3NO
Contact material	AgCdO
Voltage	
Max. switching voltage AC/DC	400 V / 400 V
Min. switching voltage AC/DC	10 V
Current	
Rated load AC1	16 A / 250 V AC or 10 A / 380 V AC
DC1	16 A / 24 V DC
Min. switching current	50 mA
Max. inrush current	40 A
Rated current	16 A
Max. breaking capacity	4 000 VA
Resistance	< 100 mOhm at 1 A, 24 V
Max. operating frequency	
at rated load	1 200 cycles/h
no load	12 000 cycles/h

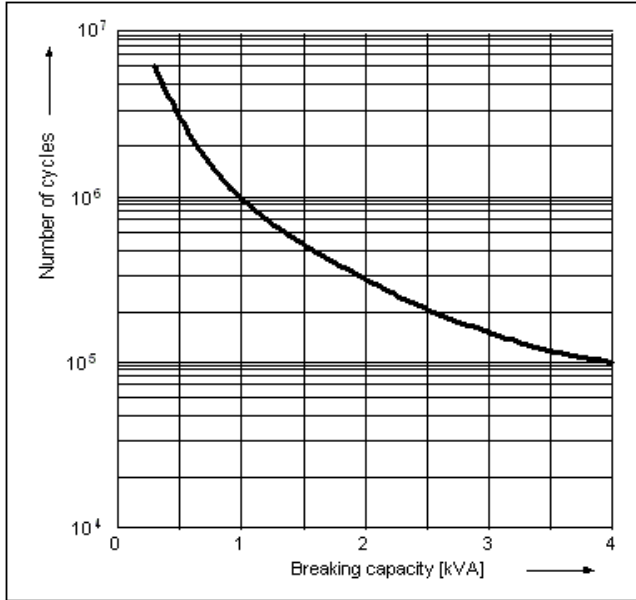
Connections Diagram



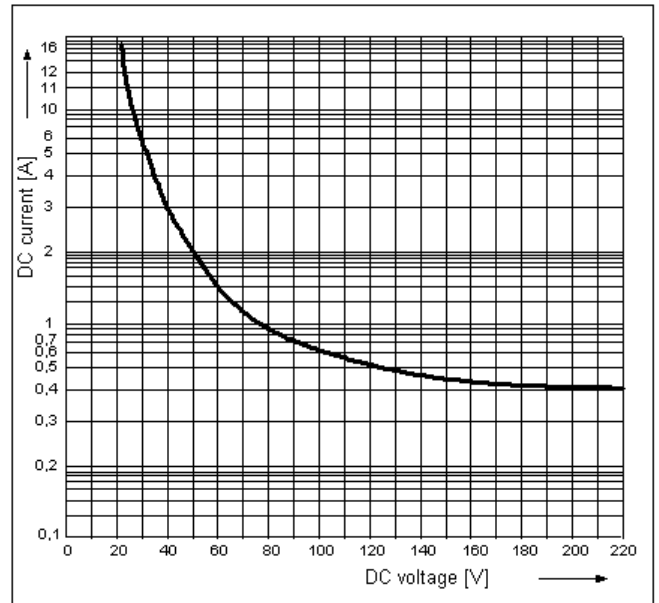
INSULATION DATA

Insulation category C400
Voltage
 Insulation rated voltage 400 V AC
Dielectric strength
 coil-contact 2 500 V AC
 contact-contact 1 500 V AC
 pole-pole 2 500 V AC
Contact-coil distance
 clearance > 6 mm
 creepage > 8 mm

ELECTRICAL LIFE AT AC RESISTIVE LOAD



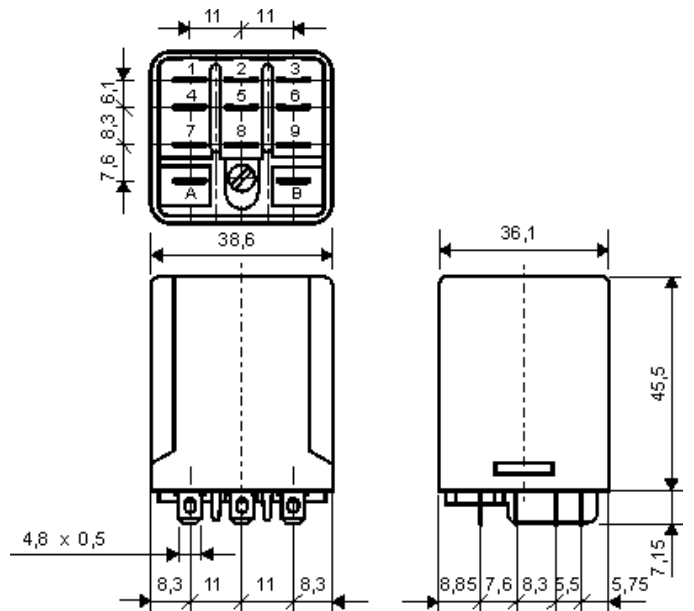
MAX. DC RESISTIVE LOAD BREAKING CAPACITY



GENERAL DATA

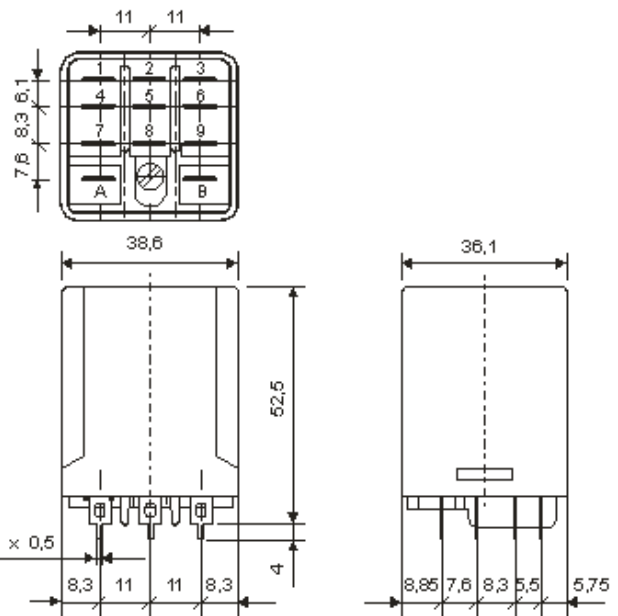
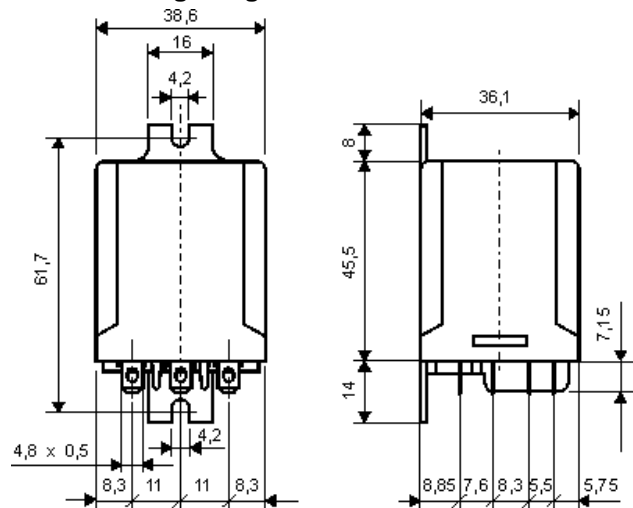
Operating time (typical values) 8 ms (AC), 11 ms (DC)
 Release time (typical values) 8 ms (AC), 7 ms (DC)
Electrical life
 resistive 10⁵ at 16 A, 250 V AC
 cos see diagram
 Mechanical life (cycles) > 10⁷
 Dimensions (L x W x H) 38,6 x 36,1 x 45,5 mm
 Weight 85 g
Ambient temperature
 storing -40...+85°C
 operating -40...+70°C (for 10A on contact)
 -40...+55°C (for 16A on contact)
 Cover protection category IP40
 Shock resistance 10 g
 Vibration resistance 5 g for 10...150 Hz
 Solder bath temperature max. 270°C
 Soldering time max. 5 s

standard version



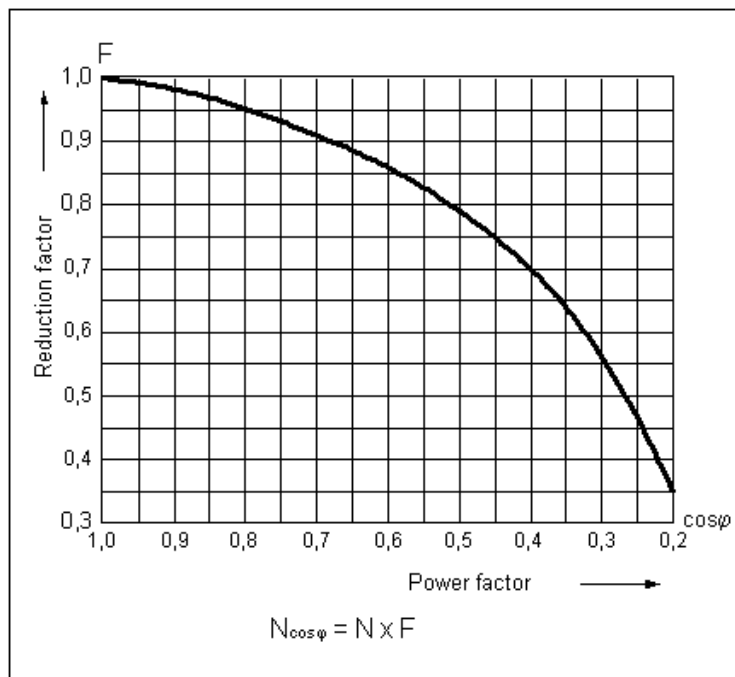
DIMENSIONS

with mounting flange



PCB version

ELECTRICAL LIFE REDUCTION FACTOR AT AC INDUCTIVE LOAD



MOUNTING:

- direct PCB mounting,
- FASTON connectors 4.8 mm,
- DIN rail mount socket with screw terminal GUC11 (clip MBA).

HOW TO ORDER RUC RELAY: ORDERING CODES

