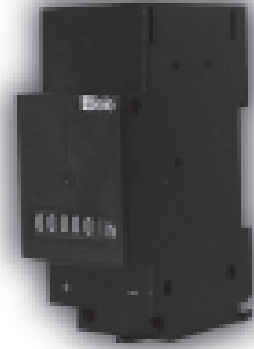


- ▶ DIN-Rail mounting
- ▶ Width 35mm
- ▶ Without zero reset
- ▶ Without terminal cover



▶ Technical data

▶ 1. Indicators

Counter capacity:	99 999h
Accuracy of reading:	0.1h
Numeral colour:	white, decimal figures red
Numeral height:	4.4mm
Operation indicator:	flashing LED

▶ 2. Mechanical design

Self-extinguishing plastic housing, IP rating IP50
Class of protection II
Mounted on DIN-Rail TS 35 according to EN 50022
Shockproof terminal connection according to VBG 4,
IP rating IP20
Initial torque: max. 4Nm
Terminal capacity:
1 x 1.5 to 10mm² without multicore cable end
2 x 0.8 to 2.5mm² without multicore cable end
1 x 1.0 to 6mm² flexible with multicore cable end
2 x 0.8 to 2.5mm² flexible with multicore cable end

▶ 3. Input circuit

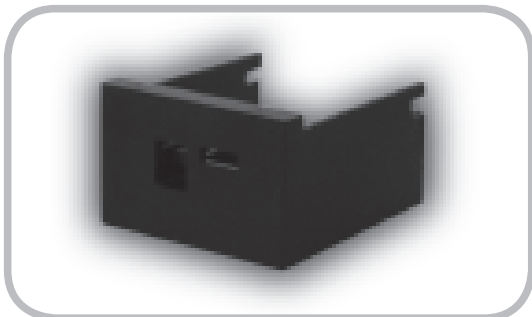
Supply voltage:		
24V AC		(TBW70.29 24VAC)
230V AC		(TBW70.29 230VAC)
Tolerance:		
24V AC	±15%	(TBW70.29 24VAC)
230V AC	±15%	(TBW70.29 230VAC)
Rated frequency:	50 to 60Hz	
Rated consumption:		
24V AC	approx. 0.1VA	(TBW70.29 24VAC)
230V AC	approx. 1.5VA	(TBW70.29 230VAC)

▶ 4. Ambient conditions

Ambient temperature:	-15 to +55°C
Storage temperature:	-15 to +55°C
Transport temperature:	-15 to +55°C
Relative humidity:	<90%

▶ 5. Accessories

KA-TBX70.29:	sealable terminal cover
--------------	-------------------------



► Dimensions

